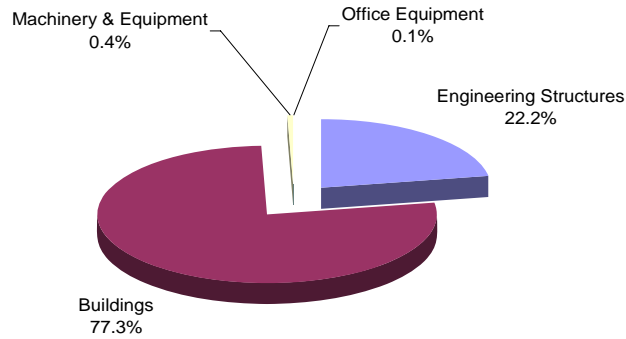


AUGUST 2010

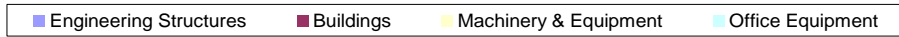
# OUR CONNECTION



## TOWN OF MAYERTHORPE 2010 Capital Projects



**Legend**



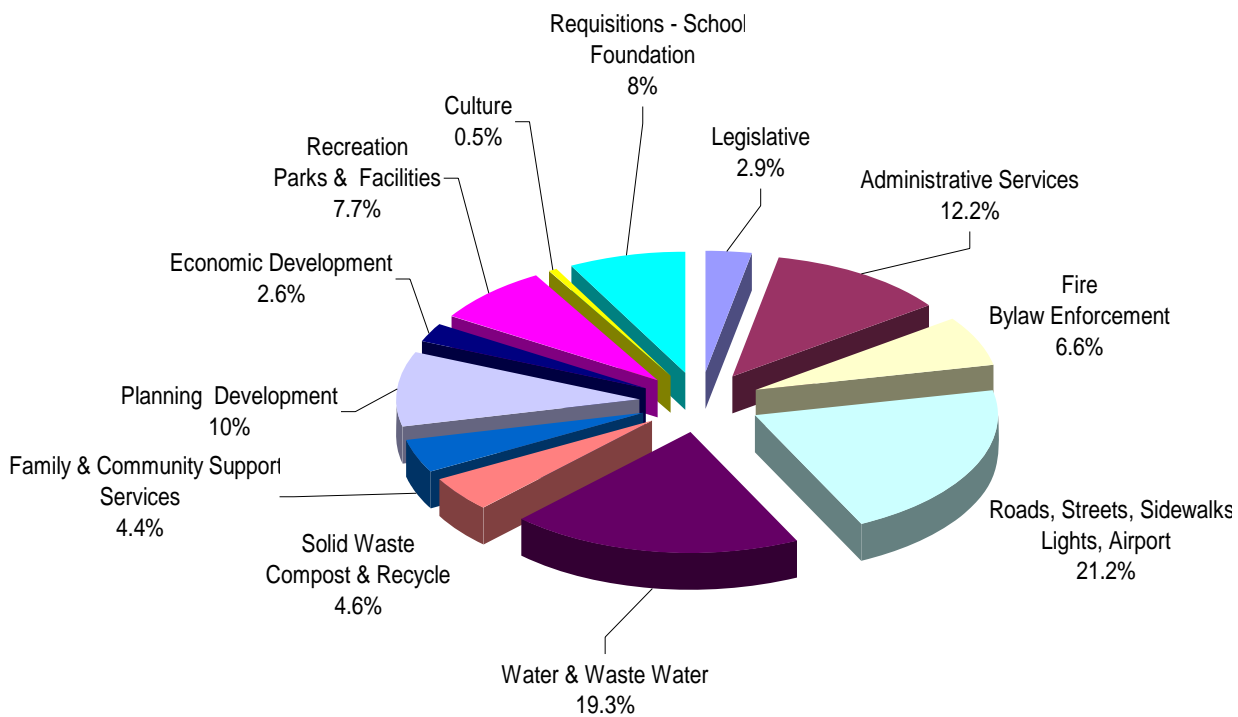
Sidewalks .....	\$ 82,000
Water Line Replacements .....	\$ 63,240
Water and Sewer Line Installations .....	\$ 350,809
Walking Trail .....	\$ 10,000
Sewer Upgrade/Expansion .....	\$ 2,864,088
Water Treatment Plant Upgrade Expansion .....	\$ 3,442,292
Exhibition Centre/Swimming Pool Replacement .....	\$ 8,296,796
Machinery & Equipment .....	\$ 56,939
Office Equipment .....	\$ <u>16,200</u>

Total

\$15,182,364

# TOWN OF MAYERTHORPE 2010 Operating Budget

The following pie chart outlines 2010 Operating Expenses for the Town of Mayerthorpe:



### Legend

■ Legislative	■ Administrative Services	■ Fire & Bylaw Enforcement
■ Roads, Streets, Sidewalks, Lights, Airport	■ Water & Waste Water	■ Solid Waste, Compost, Recycle
■ Family & Community Support Services	■ Planning & Development	■ Economic Development
■ Recreation, Parks & Facilities	■ Culture	■ Requisitions, School & Foundation

## TOWN OF MAYERTHORPE BYLAW BULLETIN

Just a reminder that Dog licenses for 2010 are now overdue. Please get yours as soon as possible. A \$5.00 license is a lot cheaper than a \$50.00 fine. An unusually high number of Bylaw Tickets have had to be written so far this year for failing to obtain a Dog Tag so please pick up yours ASAP. Dogs are not permitted to be off the owner's property at any time of the day or night without being on a leash.

Traffic safety is a priority and subsequently enforcement of traffic rules will continue. The following are traffic issues that will be focused on along with speeding;

U turns can only be made at an intersection (an alley is not an intersection). It is illegal to park on the wrong side of the road facing oncoming traffic.

It is illegal not to come to a complete stop at a stop sign.

It is illegal not to wear your seat belt.

When angle parking, it is illegal to cross into an oncoming traffic lane in order to enter or exit a parking stall. With the lines now painted on the new pavement to define traffic lanes, this infraction is now being enforced. Take a minute to go to the nearest intersection and make a U turn. It will save you \$172.00.

Please be aware of where the 30 KPH speed limits start and end in the downtown area. When travelling north, the 30 KPH sign is located just north of 46<sup>th</sup> Ave. It ends at the Stop Sign at 52<sup>nd</sup> Ave. When travelling south, the 30 KPH speed zone starts at the north end of the tracks and continues to just south of 46<sup>th</sup> Avenue.

Recreational Vehicles and Trailers of any type can once again be parked on the street for up to 72 hours. After the 72 hour period, they must be removed from the street for a minimum of 72 hours before it can once again be parked on the road. Slide outs are not permitted to be extended while parked on the street as they cause an obstruction on either the road or the sidewalk.

Finally, I want to remind people to please keep their grass cut. This includes the grass on any boulevard in front of or adjacent to your property as well as any ditch. The grass between your back fence and the alley must also be kept cut. Using the Town grader as an excuse not to cut the grass particularly in the alleys will not fly. Yes you may have to take a rake to the grass after the grader passes to ensure it is free of rocks but it should not be a great hardship. So far 45 notices have had to be issued to property owners over grass issues. This is approximately 5% of the properties in Town which is considered to be quite high.

The above noted bylaws, as well as, all others of an enforcement nature can be viewed on the Town website at [www.mayerthorpe.ca](http://www.mayerthorpe.ca). Should anyone have any questions, please contact myself at 786-2416.

Gord Sedgewick  
Community Peace Officer  
Town of Mayerthorpe.



## Development

Reminder to all Mayerthorpe residents, if you are planning any type of development please contact the Town Office prior to construction for information regarding a development permit or you may view our Land Use Bylaw No.890 at [www.mayerthorpe.ca](http://www.mayerthorpe.ca).



**Back in May, I was contacted by a member of the Library Board and asked to come up with an idea for the kids to do over the summer. I thought of perhaps building a helicopter and maybe getting a helicopter ride as a prize. I contacted Matthew Tartel of Mayerthorpe. Matthew works for Highland Helicopters Ltd out of Whitecourt. Within 24 hours Matthew made it happen. He jumped at the chance to do something for the kids in this community and for that I would like to express my thanks to both him and Highland Helicopters for providing such a rare opportunity for a young person in Mayerthorpe.**

**Gord Sedgewick  
Community Peace Officer  
Town of Mayerthorpe**

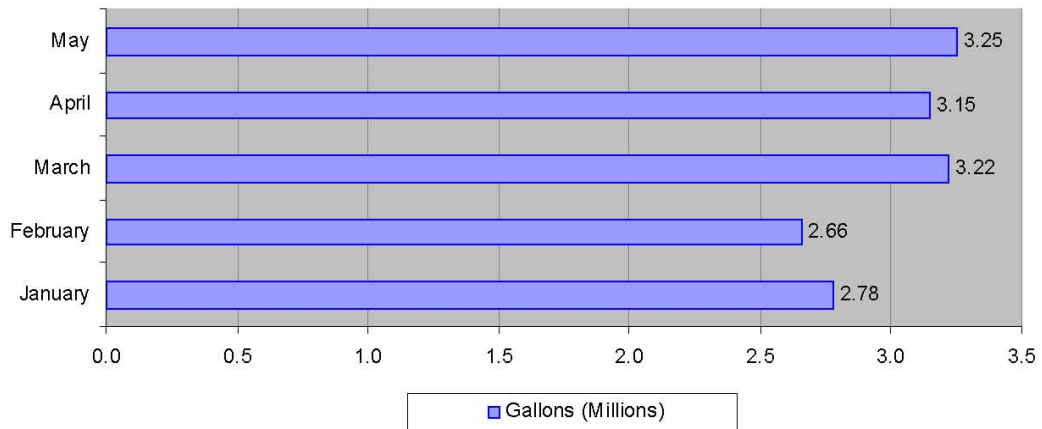
# Water Use

Two thirds of all the people on Earth use less than 15.85 gallons of water a day, the average Mayerthorpeian may use more than that amount during a single shower.

## Daily Water Use for Mayerthorpe

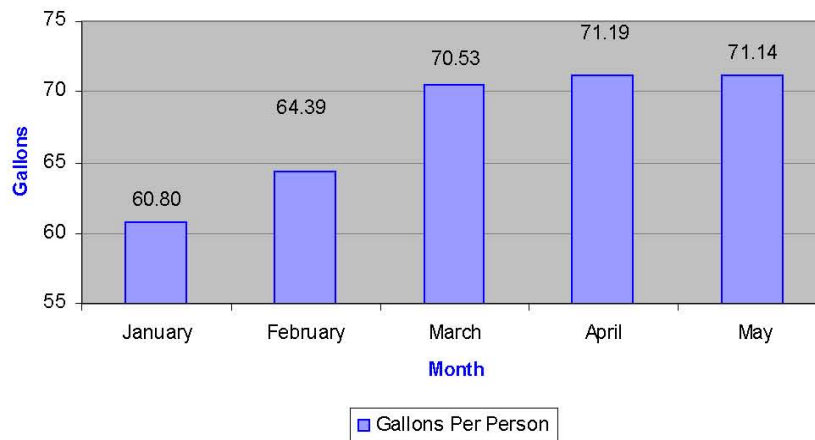
Mayerthorpe's average water use (gallons per month)

**TOWN OF MAYERTHORPE**  
**WATER USAGE**  
Total Per Month



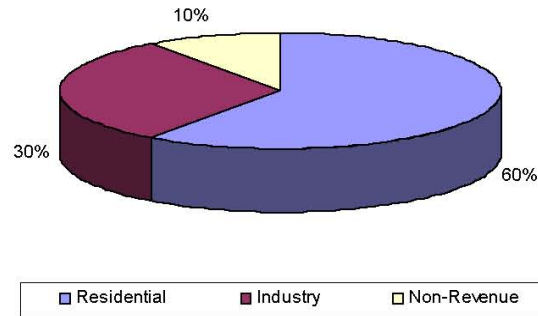
Per person average water use for Mayerthorpe (gallons per day)

**TOWN OF MAYERTHORPE**  
**DAILY WATER USAGE**  
Per Person (Population 1,474)



## Households use the majority of Mayerthorpe's water

### TOWN OF MAYERTHORPE WATER USAGE Per Classification

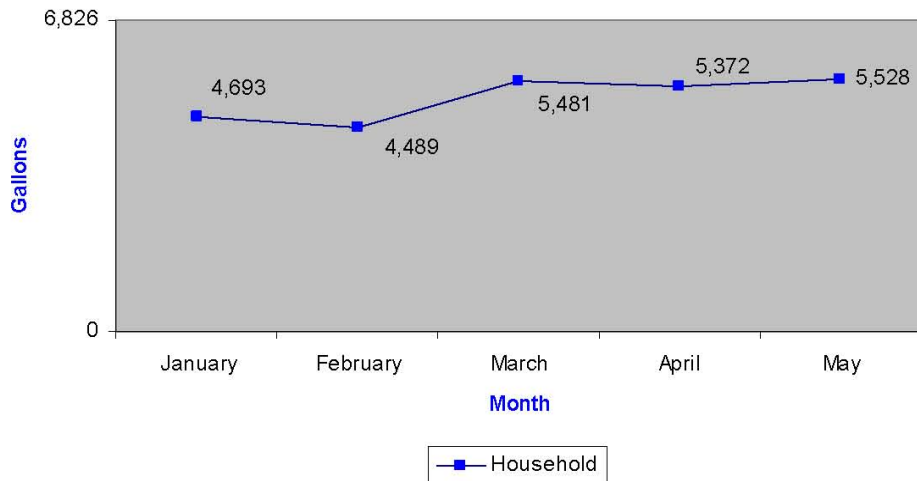


More than half of the water from our reservoir - about 60 per cent - is used by residential users, families at home.

About 30% used in industry - industry, businesses, schools and institutions.

Around 10 per cent is called 'non revenue' water. This includes leaks, water used for fire-fighting, and water unaccounted for as a result of meter inaccuracies.

### TOWN OF MAYERTHORPE DAILY WATER USAGE Per Household



- 20% of water used at home is in the garden.
- 30% is used in the shower.
- 50% is used for washing clothes, flushing the toilet, using the dishwasher, having baths and other general tap use.

**PRESS RELEASE**

**June, 2010**

***Mayerthorpe Exhibition Centre Replacement Project***

Mayor and Council wishes to keep you the people of Mayerthorpe informed by providing the following update:

Mayerthorpe and Area Regional Planning Committee with representatives from Town of Mayerthorpe, Woodlands County and Lac Ste. Anne County reviewed and recommended approval of the design drawings which were then approved by Town Council.

Request for Proposal for construction of the Mayerthorpe Exhibition Centre were issued on June 2, 2010. The Request for Proposal provided for a value based selection process for construction of a pre-engineered metal building based on +/- 3,200m<sup>2</sup>. This project had been posted on the Alberta Purchasing Connection, COOLNet Alberta, and COOLNet Edmonton in accordance with public procurement requirements. The closing date to receive proposals was June 17, 2010 4:00 p.m.

Six proposals were received and all based on a pre-engineered metal building. There were no qualifying proposals for the flexible membrane system. The proposals were evaluated in accordance with the criteria listed in the project manual and subsequently the two highest scored proponents were selected for interviews to clarify certain components. The final score resulted in Chandos Construction Ltd. attaining the highest score.

Chandos Construction Ltd. is a company based out of Edmonton and has

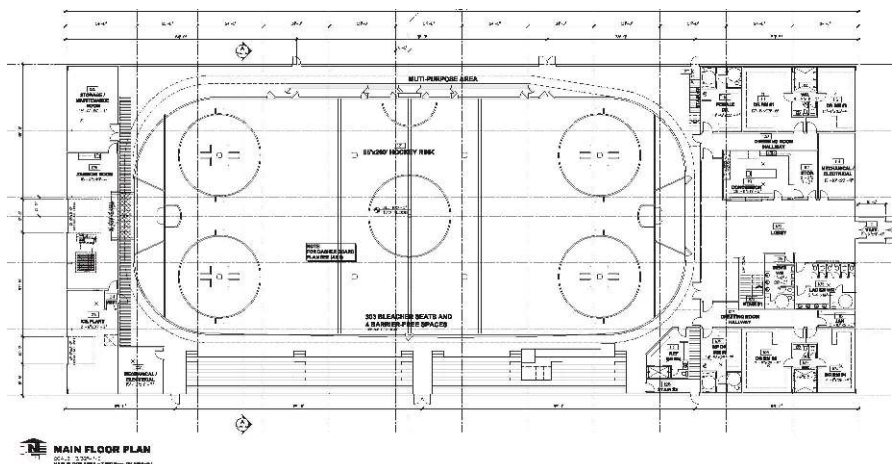
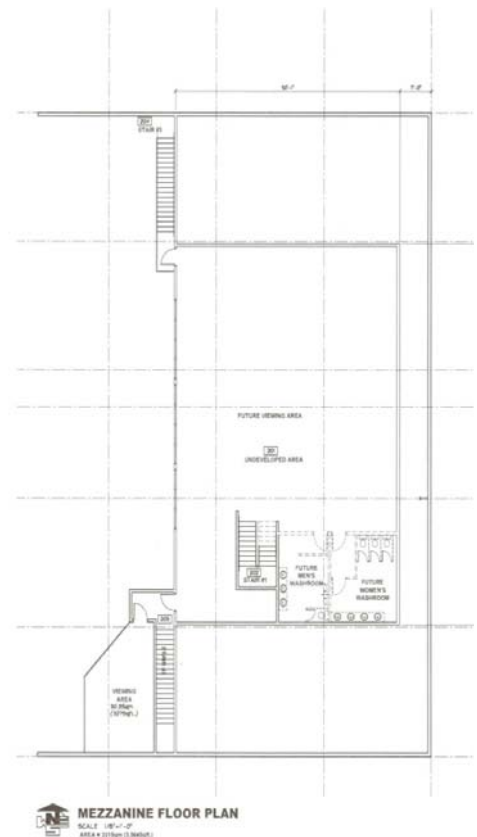
completed numerous recreation projects and has diverse experience in the construction industry. Chandos Construction Ltd. anticipates site setup as early as July 30, 2010. Other works include commencing excavation in August, concrete work in August, pre-engineer structure erected in October, and interior works thereafter. The completion date for this project is earmarked for May 11, 2011. To view the detailed Construction Schedule login to [www.mayerthorpe.ca](http://www.mayerthorpe.ca) or stop by the Town Office.

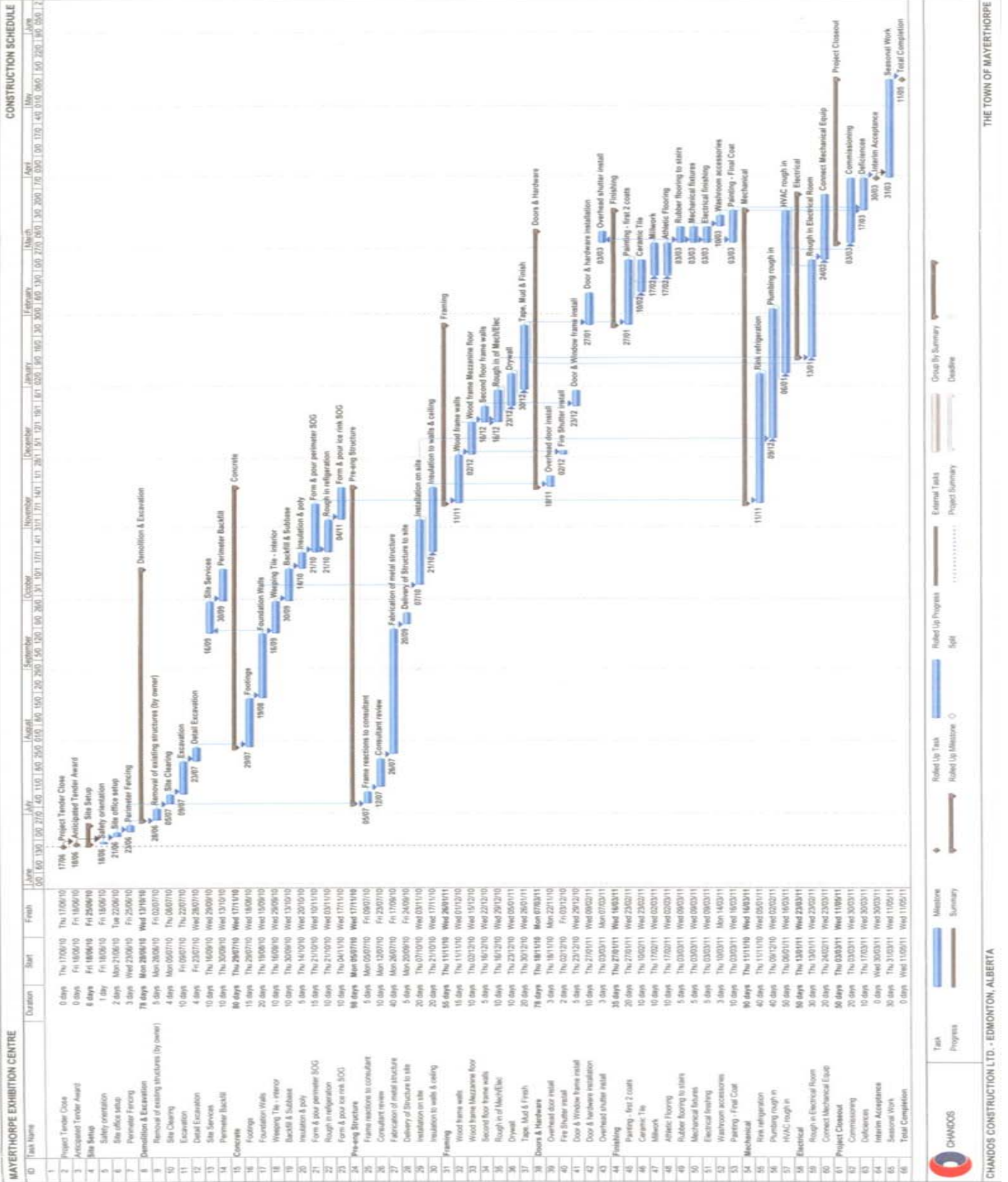
The Mayerthorpe Exhibition Centre includes: regulation ice surface of 85' x 200', six dressing rooms, barrier free accessibility, bleacher seating for 303 with 4 barrier free seating, insulation factor of R-30 in the roof and walls, multi use area around the ice surface, and undeveloped upstairs mezzanine, new ice plant, and many more upgrades.

Attached is the floor plan for the new Mayerthorpe Exhibition Centre.

Respectfully,

Doug McDermid  
Mayor





## MAYERTHORPE & DISTRICT AGRICULTURAL FAIR AND PARADE

**August 14 & 15, 2010**  
**Parade: 10:00 a.m.**  
**Theme: Kids Need Recreation!**

Parade entries & judging at 9:30 a.m. Parade 10:00 a.m.  
 Meet east of Martin Equipment (at truck parking).  
 Free Pancake Breakfast Diamond Center 7:00—9:30 a.m.

Slow Pitch Ball Tournament, Men's Baseball Tournament for information, or to register call Trent 785-2257.

Events: Bench Exhibits, Wagon Rides, Balloon Artist, Jackpot Gymkhana, Magician, Midway, Children's Carnival, Beer Gardens, Petting Zoo Pony Rides, Junior Garden Tractor Rodeo, Senior Garden Tractor Rodeo, Adult Dance, Pet Show, Heavy Horse Pull, Beef Show, Dunk Tank, Face Painting, Clowns, and Canadian Mounted Shooting Demonstration.

Fair Booklets are available at Town Office, Tourist Information Booth (Fallen Four Memorial Park), Rexall Drug Store.

For information: Leota Heaven at 648-2144

MAYERTHORPE PUBLIC LIBRARY— IS OFFERING TD SUMMER READING PROGRAM *DESTINATION JUNGLE* FROM JULY 12TH TO AUGUST 20TH. WE WILL BE OFFERING STORIES, CRAFTS AND GAMES FOR THE CHILDREN. \*\*FRIDAY 2—5 P.M.MOVIE AFTERNOON WITH POP-CORN.\*\*\*\*\*

### AEROBATIC AIR DISPLAY



Pilot: Bud Granley  
 August 3, 2010—1:00 p.m.  
 Fallen Four Memorial Park  
 No Cost

### MAYERTHORPE BAPTIST CHURCH

Children's

Daily Vacation Bible Camp

**August 23—26 — 9:00 a.m. - 12:00 noon daily**

Baptist church. Games, singing, crafts, snacks, bible teachings.

For information contact Elaine, 786-2867

No Cost

# SUMMER PROGRAMS FOR AUGUST



## ***Basketball Camp***

Age 10–12

August 14, 2010

Elmer Elson Elementary

\$20.00 charge, bring lunch

9 a.m.— 4 p.m.

Registration necessary

786-2416

This fun filled Camp will increase your child's confidence in the sport of basketball. Prizes will be given!



## ***Outdoor Field Trip***

### ***Rotary Park—Whitecourt***

August 18, 2010

10 a.m. — 4 p.m.

\$5.00 Charge, bring lunch

Registration necessary

786-2416



## ***Volleyball Tournament***

August 11, 2010

Outdoor Skating Rink

1 p.m. — 4 p.m.

No Charge

Dress appropriately



## ***Scavenger Hunt***

August 4, 2010

Sports Grounds

1 p.m. — 4 p.m.

No Charge

Snack provided

**Adventure at it's best!**



## Neighbourhood Block Party Program

### REGISTRATION FORM

Name: \_\_\_\_\_

Phone: \_\_\_\_\_

Location of NBP: \_\_\_\_\_

Date of NBP: \_\_\_\_\_

Number of households invited to NBP \_\_\_\_\_

Check the Permits & Bylaws section:

Do you need a Temporary Road Closure permit?

Do you need traffic barricades?

Do you need a fire permit?

Please submit this completed form to Joanne Johnson, FCSS  
at Town of Mayerthorpe, or Fax to

780-786-4590

Thank you for having a Neighbourhood Block Party!  
It's a great way to get to know your neighbours, as well as  
build and reinforce neighbourhood and community security.

For more information check [www.mayerthorpe.ca](http://www.mayerthorpe.ca)



# Neighbourhood Block Party Program

## Registration & Rebate Package

Includes:

- Permits & Bylaws Information
- Registration Form and Rebate Application

A Neighbourhood Block Party (NBP) creates an opportunity for neighbours to meet in a social environment, and get to know one another better. Neighbours who know one another tend to look out for each other, and are aware of who belongs in the neighbourhood. This helps develop safer and more caring neighbourhoods.

### 3 easy steps!

#### Step 1 Register your party:

- submit completed registration form to  
Joanne Johnson, FCSS at Town of Mayerthorpe  
or fax to 780-786-2416
- Apply for permits if required  
(see Permits & bylaws)

#### Step 2 Plan and host your party

#### Step 3 Submit Rebate Application (with original receipts) to Joanne Johnson, FCSS at Town of Mayerthorpe.

Up to a \$50 (maximum) rebate per NBP!  
(approved items include food & non-alcoholic beverages)

# We are on the Web

## [www.mayerthorpe.ca](http://www.mayerthorpe.ca)

### West End Bus Trips for Older Adults

- |                  |                             |   |
|------------------|-----------------------------|---|
| <b>August 3</b>  | 9:30 a.m. - 4 p.m.          | U of A Devonian Garden, Edmonton<br>(lunch included)  |
| <b>August 11</b> | 11 a.m.—3 p.m.<br>Mini Trip | Picnic at Rotary Park, Whitecourt<br>(lunch included) |
| <b>August 16</b> | 8:30 a.m.                   | Pyramid Lake Resort                                   |
| <b>August 17</b> | 9 p.m.                      | Jasper  |
| <b>August 20</b> | 9 a.m.<br>Mini Trip         | Canadian Tractor Museum, Westlock                     |
| <b>August 30</b> | 9:30 a.m.—5 p.m.            | Ukrainian Cultural Heritage Village                   |

**TO REGISTER CALL 786-2416**

Box 420  
4911-52 Street  
Mayerthorpe, AB  
T0E 1N0

Phone: 780-786-2416  
Fax: 780-786-4590  
E-mail: [admin@mayerthorpe.ca](mailto:admin@mayerthorpe.ca)



### *Council Meetings Dates*

- August 9, 2010—7 pm
- August 16, 2010—7 pm P & P
- August 23, 2010—7 pm
- September 13, 2010—7 pm
- September 20, 2010—7 pm P & P
- September 27, 2010—7 pm
- October 11, 2010—7 pm
- October 18, 2010—7 pm P & P
- October 25, 2010—7 pm
- November 8, 2010—7 pm
- November 15, 2010—7 pm P & P

If you wish to meet with Council please notify the Town Office the Thursday before the P & P meeting.

# "The Development of a Safe, Healthy and Successful Community,"